



Customer				Ship To			
Company				Name			
Account #		Date		Address			
<input type="checkbox"/> Quote	<input type="checkbox"/> PO #			City		State	
Buyer				ZIP		Phone	
Mark For				Email / Fax			

Technical Data Overview

Maximum User Weight / Load	375 lbs (170 kg) / 375 lbs. (418 kg)	Motor	Brushless, 250W, 36 V / 15 A
Device Weight (excluding battery)	6.6 lbs. (3 kg)	Motor Brake	NA, no rearward drive
Battery Weight	3.2 lbs. (1.45 kg)	Battery Type	Lithium-Ion 5.8Ah
Battery Range	Up to 9 mi (14.5 km)	Device Charger Type	100-240V AC, 42V - 2A
Maximum Speed (adjustable)	1.2 mph 2.3 mph 3.1 mph	Charging Time	4.5 - 5 h
Maximum Slope	18% (10°)	Warranty	2 yr Battery, 3 yr Motor

Included Components

- | | | |
|------------------------|----------------------------------|-------------------|
| ✓ Power Assist Motor | ✓ Adjustable Attachment Hardware | ✓ Lithium Battery |
| ✓ Attendant Controller | ✓ Device Charger | ✓ Modern Backpack |

Compatibility

The Empulse R20 is NOT compatible with the following:

- ☒ Folding Push Handles
 ☒ Omit Push Handles
 ☒ Crutch Holder
☒ Tilt-In-Space: Foot-Activated Tilt Lever, Powered Tilt, Battery & Vent Tray

The Empulse R20 may have interference with the following:

- ☐ O2 Holder
 ☐ Backpack
 ☐ Foot Tilt Mech / Foot Operated Wheel Lock
☐ Reclining Backrest
 ☐ Backrest Stabilizer Bar
 ☐ Adj. & Ext. Stroller Handles

✓ OPTION	HCPCS	DESCRIPTION	RETAIL
BASE			
Empulse R20			\$
Selection required.			
<input checked="" type="checkbox"/> 169PC64		Empulse R20	\$ 2,943.00

✓ OPTION	HCPCS	DESCRIPTION	RETAIL
----------	-------	-------------	--------

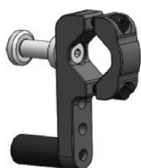
WHEELCHAIR

Selection required for all sub-sections of WHEELCHAIR.

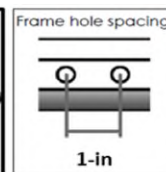
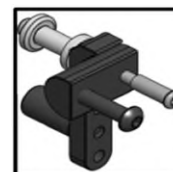
Attachment Type \$

■ 9V49	Folding Ultralight Wheelchair - Round tube hardware for diameter between 0.8 - 1.3" (22 - 32mm)	NC
■ 9V50	Tilt-In-Space Wheelchair - Flat surface mount hardware	NC

Folding Ultralight Round Clamp



Tilt-In-Space Flat Surface Clamp



Seat Width \$ \$ \$

■ 169S4	13 Inches	NC	■ 169S8	17 inches	NC	■ 169S40	21 inches	NC
■ 169S5	14 inches	NC	■ 169S9	18 inches	NC	■ 169S27	22 inches	NC
■ 169S6	15 inches	NC	■ 169S10	19 inches	NC	■ 169S41	23 inches	NC
■ 169S7	16 inches	NC	■ 169S11	20 inches	NC			

Rear Seat Height \$ \$ \$

■ 169RH15	15 inches	NC	■ 169RH19	17 inches	NC	■ 169RH21	19 inches	NC
■ 169RH16	15.5 inches	NC	■ 169RH26	17.5 inches	NC	■ 169RH37	19.5 inches	NC
■ 169RH17	16 inches	NC	■ 169RH20	18 inches	NC	■ 169RH22	20 inches	NC
□ 169RH18	16.5 inches	NC	■ 169RH27	18.5 inches	NC	■ 169RH38	20.5 inches	NC

ACCESSORIES

■ 169AG33	Additional Lithium Battery (5.8 Ah)	\$ 716.00
-----------	-------------------------------------	-----------

R20 Arm Size

For additional information, please reference the Owner's Manual or Mounting Instruction Sheet.

Seat Width	Rear Seat Height										
	15.5	16	16.5	17	17.5	18	18.5	19	19.5	20	20.5
13*	XS	XS	XS	XS	XS	XS	S	S	S	S	S
14*	XS	XS	XS	XS	XS	S	S	S	S	S	S
15	XS	XS	XS	XS	XS	S	S	S	S	S	S
16	XS	XS	XS	XS	XS	S	S	S	S	S	S
17	XS	S	S	S	S	S	S	S	S	S	S
18	S	S	S	S	S	L	L	L	L	L	L
19	S	S	S	S	S	L	L	L	L	L	L
20	S	S	S	S	L	L	L	L	L	L	L
21	S	L	L	L	L	L	L	L	L	L	L
22	S	L	L	L	L	L	L	L	L	L	L
23	S	L	L	L	L	L	L	L	L	L	L

* = Not Recommended for Zippie TS 12" Wheels

High likelihood of interference. May require adjustment of wheelchair components.



To view the Empulse R20 Product Page, please scan the QR code to the right.